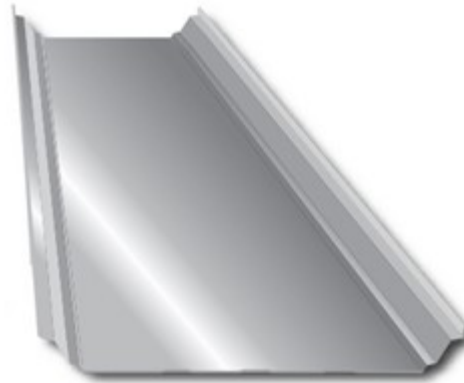
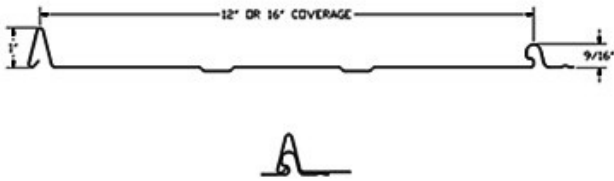


## Snap Lock - Roofing Panels

USED FOR: 



### AVAILABLE IN TWO STYLES—STRIATION OR PENCIL MARK

Structural trapezoidal standing seam roof panel 16" panel coverage, 1" rib height  
Gauges: 26 ga standard, 24 ga optional Minimum roof slope: 1/4:12 Snap together panel system Applies over solid substrate Finishes: Valspar WeatherX and Acrylic Coated Galvalume® Contact Metal Sales for load-carrying capabilities

#### Testing

- UL 2218, Class 4 Impact Resistance
- UL 790, Class A Fire Resistance Rating
- ASTM E 564-95 Diaphragm Test
- UL 580, Class 90 Wind Uplift, Construction #560 and #584
- Texas Windstorm Evaluation RC-161



2010 FBC Approved 29 ga over 2x Purlins 10999.4 29 ga over 1/2" Plywood 14645.9  
29 ga over 2x Girts 9482.3 29 ga over 5/8" Plywood 11560.1 29 ga over 7/16" OSB 14645.8  
26 ga over 16 ga Purlins 10999.3 26 ga over 16 ga Girts 9482.2 26 ga over 5/8" Plywood 14645.7  
0.032" Aluminum over 7/16" OSB 14645.5